

Clarinetto I in Sib

G. Tartini

Sonata in Re
GT 5.D02

Clarinetto I in Sib

Sonata in Re

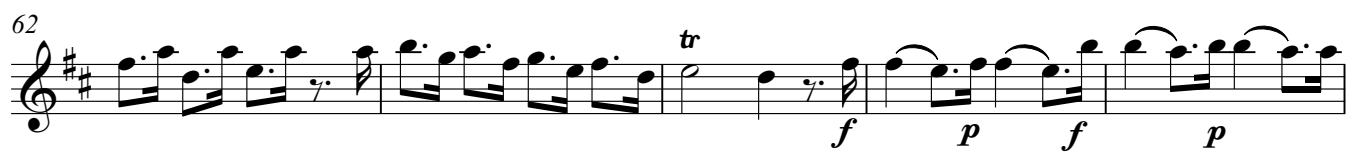
GT 5.D02

Giuseppe Tartini

arr. Anna Molaro

Allegro assai





Larghetto

f

5

p

9

1. *f* 2. *mf*

14

f

18

p *f*

23

p

27

p *tr*

31

f 1. 2.

Allegro

f *mp* *mf*

7

11 *p* *mf*

17

23 *f*

29

36 *f* *p* *f* *p*

42 *f* *p* *f* *tr* *3* *3*

49 *f* *p* *mf*

55 *f* *mp*

62

62-68

p *f*

Detailed description: This musical staff contains measures 62 through 68. It begins with a half note G4, followed by eighth notes A4, B4, and C5. Measures 63-64 feature a series of eighth-note pairs (G4-A4, A4-B4, B4-C5, C5-B4, B4-A4, A4-G4). Measure 65 has a half note G4. Measures 66-68 contain eighth-note pairs (A4-B4, B4-C5, C5-B4, B4-A4, A4-G4, G4-F#4) and end with a half note G4. Dynamics *p* and *f* are indicated below the staff.

69

69-74

Detailed description: This musical staff contains measures 69 through 74. It features eighth-note pairs (A4-B4, B4-C5, C5-B4, B4-A4, A4-G4, G4-F#4) and half notes G4, F#4, E4, and D4. The staff concludes with a 2/4 time signature.

75

75-79

f

Detailed description: This musical staff contains measures 75 through 79. It begins with a 2/4 time signature. Measures 75-79 feature eighth-note pairs (A4-B4, B4-C5, C5-B4, B4-A4, A4-G4, G4-F#4) and half notes G4, F#4, E4, and D4. The dynamic *f* is indicated below the staff.

80

80-85

tr *mp*

Detailed description: This musical staff contains measures 80 through 85. It begins with a trill (tr) over an eighth-note pair (A4-B4). Measures 81-85 feature eighth-note pairs (A4-B4, B4-C5, C5-B4, B4-A4, A4-G4, G4-F#4) and half notes G4, F#4, E4, and D4. The dynamic *mp* is indicated below the staff.

86

86-90

f

Detailed description: This musical staff contains measures 86 through 90. It features eighth-note pairs (A4-B4, B4-C5, C5-B4, B4-A4, A4-G4, G4-F#4) and half notes G4, F#4, E4, and D4. The dynamic *f* is indicated below the staff.

91

91-95

Detailed description: This musical staff contains measures 91 through 95. It features eighth-note pairs (A4-B4, B4-C5, C5-B4, B4-A4, A4-G4, G4-F#4) and half notes G4, F#4, E4, and D4.

96

96-100

p *f*

Detailed description: This musical staff contains measures 96 through 100. It begins with a trill (tr) over an eighth-note pair (A4-B4). Measures 97-100 feature eighth-note pairs (A4-B4, B4-C5, C5-B4, B4-A4, A4-G4, G4-F#4) and half notes G4, F#4, E4, and D4. Dynamics *p* and *f* are indicated below the staff.

101

101-105

p *f* 3 3 *tr*

Detailed description: This musical staff contains measures 101 through 105. It features eighth-note pairs (A4-B4, B4-C5, C5-B4, B4-A4, A4-G4, G4-F#4) and half notes G4, F#4, E4, and D4. Measures 104-105 include triplets (3) of eighth-note pairs. The dynamic *tr* is indicated above the final measure. Dynamics *p* and *f* are indicated below the staff.